

HOTARARE

Privind: aprobarea organigramei si statului de functii ale Spitalului Municipal « Caritas »
Rosiorii de Vede

Consiliul Local al Municipiului Rosiorii de Vede, intrunit in sedinta ordinara de lucru
astazi 19.02.2020

Avand in vedere:

- referatul de aprobare al primarului inregistrat sub nr. 3550/13.02.2020;
 - raportul de specialitate al Compartimentului Resurse Umane inregistrat sub nr. 3552/13.02.2020;
 - adresa inregistrata sub nr. 3353/12.02.2020 prin care Spitalul Municipal « Caritas »
Rosiorii de Vede solicita aprobarea organigramei si statului de functii
 - prevederile Legii nr. 95/2006 privind reforma in domeniul sanatatii cu modificarile
si completarile ulterioare;
 - prevederile Legii nr. 53/2003 privind Codul muncii republicata, cu modificarile si
completarile ulterioare;
 - prevederile O.U.G. nr. 162/2008 privind transferul ansamblului de atribuții și
competențe exercitate de Ministerul Sănătății Publice către autoritățile administrației
publice locale cu modificarile si completarile ulterioare;
 - prevederile HCL nr. 101/20.06.2019 privind: aprobarea organigramei si statului de
functii ale Spitalului Municipal « Caritas » Rosiorii de Vede cu modificarile si
completarile ulterioare ;
 - avizul Ministerului Sanatatii nr. XI/A/11255/SP/4382/25.04.2018
 - prevederile Ordinului nr. 1224/2010 privind aprobarea normativelor de personal
pentru asistența medicală spitalicească, precum și pentru modificarea și completarea
Ordinului ministrului sănătății publice nr. 1.778/2006 privind aprobarea normativelor de
personal;
 - prevederile Ordinului M.S. nr.1500/2009 privind aprobarea Regulamentului de
organizare și funcționare a secțiilor și compartimentelor de anestezie și terapie intensivă
din unitățile sanitare;
 - raportul de avizare a comisiei de specialitate pentru activitati social-culturale, culte,
invatamant, sanatate si familie, munca si protectie sociala, protectie copii, tineret si sport a
consiliului local ;
 - raportul de avizare a comisiei de specialitate pentru administratie publica locala,
apararea ordinii si linistii publice, a drepturilor cetatenilor, juridica si de disciplina a
consiliului local;
 - prevederile art. 129 alin. (2) lit.a) și alin. (3) lit.c) din OUG nr. 57/2019 privind
Codul administrativ cu modificarile si completarile ulterioare ;
- In temeiul art. 139 si 196 alin. (1) lit. a) din OUG nr. 57/2019 privind Codul
administrativ cu modificarile si completarile ulterioare,

HOTARASTE

Art.1 Se aproba organigrama si statul de functii ale Spitalului Municipal « Caritas » Rosiorii de Vede conform anexelor nr. 1 si nr. 2 care fac parte integranta din prezenta.

Art.2 Cu data prezentei isi inceteaza aplicabilitatea HCL nr. 101/20.06.2019 cu modificarile si completarile ulterioare.

Art.3 De ducerea la indeplinire a prezentei hotarari raspund Comitetul Director si Consiliul de Administratie al Spitalului Municipal « Caritas » Rosiorii de Vede.

Art.4 Prezenta hotarare se va comunica prin grija secretarului general al municipiului, in termenul prevazut de lege, autoritatilor si persoanelor interesate.

PRESEDINTE DE SEDINTA
Piper-Savu Cristiana-Mirela



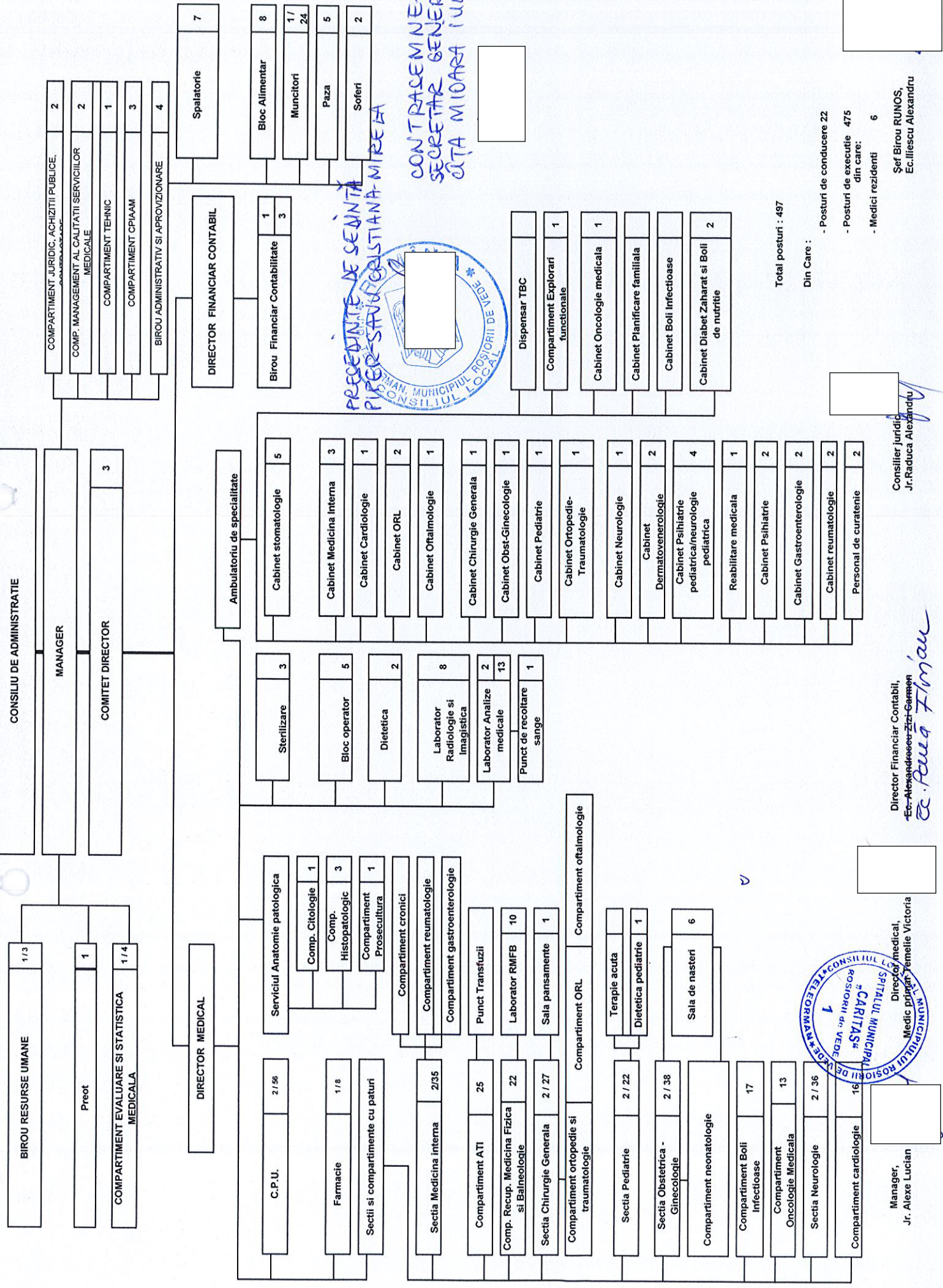
Contrasemneaza
SECRETAR GENERAL
Cița Mioara Iulia



ROSIORII DE VEDE

Nr. 35/19.02.2020

Prezenta hotarare a fost adoptata cu un numar de ___ voturi, pentru - împotriva - abtineri, din totalul de 19 consilieri in functie din care ___ prezenti.



PRECEDENTE DE SEFINITA
PIPER SAVU CRISTIANA-MIRELA

CONTRACEM NEA 2
SECRETAR GENERAL
CUTA MIODARA IULIA



Total posturi : 497

Din Care :

- Posturi de conducere 22
- Posturi de executie 475 din care:
- Medici rezidenti 6

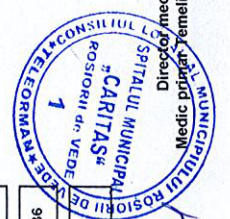
Şef Birou RUNOS,
Ec.Ilieşcu Alexandru

Consilier juridic
Jr.Raduca Alexandru

Director Financiar Contabil,
Ec.Alexandru Zizi-Garmen

Director medical,
Medic primar Gemelle Victoria

Manager,
Jr. Alexe Lucian



SPITALUL MUNICIPAL "CARITAS" ROSIORII DE VEDE
 ADRESA : Str. Carpati nr. 33 ROSIORII DE VEDE

TEL/FAX: 0247406611/0247466388

PRESEDINTE DE SEDINTA
 PIPER-SAVU CRISTIANA MIRELA

ANEXA NR.2 LA HCL NR. 35/19.02.2020

CONTRACEMNEAZA
 SECRETAR GENERAL
 CITA MIOARA-IULTA

STAT DE FUNCTII
 VALABIL CU 01.03.2020

Nr. crt.	Denumire functie cf. Legii 250/2016	Specialitate	Gra-datia	Nivel studii	Nr. Posturi	Observatii
0	1	2	3	4	5	6
CODUCEREA EXECUTIVA - COMITETUL DIRECTOR						
1	Manager - gradul II	Stiine Juridice	5	S	1	
2	Director Medical - gradul II	Medicina	4	S	1	
3	Director Financiar Contabil - gradul II	Stiinte economice	5	S	1	cu delegatie

SECTIA MEDICINA INTERNA - 55 paturi,
 din care COMPARTIMENT CRONICI- 20 Paturi - supraf 878 mp
 COMPARTIMENT REUMATOLOGIE 3 Paturi
 COMPARTIMENT GASTROENTEROLOGIE 3 Paturi

4	Medic primar - Sef sectie	Medicina interna	5	S	1	vacant
5	Medic primar	Medicina interna	5	S	1	
6	Medic specialist	Medicina interna	2	S	1	vacant
7	Medic primar	Medicina interna	5	S	1	vacant CIM Determ. 1 an
8	Medic primar	Medicina interna	5	S	1	vacant
9	Asistent med. princ. Sef sectie	generalist	5	S	1	
10	Asistent med. princ.	generalist	5	S	1	vacant
11	Asistent med. princ.	generalist	5	PL	1	vacant
12	Asistent med. princ.	generalist	3	PL	1	
13	Asistent med. princ.	generalist	3	PL	1	
14	Asistent med. princ.	generalist	5	PL	1	
15	Asistent med. princ.	generalist	3	PL	1	
16	Asistent med. princ.	generalist	4	PL	1	
17	Asistent med. princ.	generalist	4	PL	1	
18	Asistent med. princ.	generalist	5	PL	1	vacant
19	Asistent med.	generalist	4	PL	1	
20	Asistent med. princ.	generalist	4	PL	1	
21	Asistent med.	generalist	1	PL	1	
22	Asistent med.	generalist	2	PL	1	

23	Asistent med. debutant	generalist	0	PL	1	
24	Asistent med. debutant	generalist	4	PL	1	
25	Asistent med. debutant	generalist	2	PL	1	vacant
26	Asistent med. debutant	generalist	2	PL	1	vacant
27	Infirmiera		5	G	1	
28	Infirmiera		5	G	1	
29	Infirmiera		3	G	1	
30	Infirmiera		4	G	1	
31	Infirmiera		5	G	1	vacant
32	Infirmiera		1	G	1	
33	Infirmiera		5	G	1	
34	Infirmiera		2	G	1	
35	Infirmiera		5	G	1	vacant
36	Infirmiera		5	G	1	vacant
37	Infirmiera		5	G	1	vacant
38	Ingrjiitor curatenie		2	G	1	
39	Ingrjiitor curatenie		0	G	1	
40	Ingrjiitor curatenie		1	G	1	vacant

COMPARTIMENT CARDIOLOGIE 20 PATURI

41	Medic primar- coordonator compartiment	Cardiologie	4	S	1	
42	Medic specialist	Cardiologie	3	S	1	
43	Asistent med. princ.	generalist	5	PL	1	
44	Asistent med. princ.	generalist	5	PL	1	
45	Asistent med.princ.	generalist	3	PL	1	
46	Asistent med. principal	generalist	4	PL	1	
47	Asistent med. principal	generalist	3	PL	1	
48	Asistent med.	generalist	2	SSD	1	
49	Asistent med.	generalist	3	PL	1	
50	Asistent med. debutant	generalist	2	PL	1	vacant
51	Infirmiera		5	G	1	
52	Infirmiera		3	G	1	
53	Infirmiera		4	G	1	
54	Infirmiera		3	G	1	
55	Infirmiera		5	G	1	
56	Ingrjiitor curatenie		5	G	1	

COMPARTIMENT ANESTEZIE SI TERAPIE INTENSIVA - 12 PATURI - 203 m.p - categoria a -III- a

57	Medic specialist-coordonator compartiment ATI		3	S	1	
----	---	--	---	---	---	--

58	Medic primar	ATI				1	vacant
59	Medic specialist	ATI				1	vacant
60	Asistent med. princ.	generalist			2	S	
61	Asistent med. princ.	generalist			5	S	
62	Asistent med. princ.	generalist			5	S	
63	Asistent med. princ.	generalist			5	S	
64	Asistent med. princ.	generalist			5	PL	
65	Asistent med. princ.	generalist			5	PL	
66	Asistent med. princ.	generalist			5	PL	
67	Asistent med. princ.	generalist			5	PL	
68	Asistent med. princ.	generalist			3	PL	
69	Asistent med. princ.	generalist			4	PL	
70	Asistent med. princ.	generalist			3	PL	vacant
71	Asistent med.	generalist			5	PL	vacant
72	Asistent med.princ.	generalist			3	PL	
73	Asistent medical princ.	generalist			3	PL	vacant
74	Infirmiera				5	G	
75	Infirmiera				4	G	
76	Infirmiera				3	G	
77	Infirmiera				5	G	
78	Infirmiera				5	G	
79	Infirmiera				5	G	vacant
80	Infirmiera				5	G	vacant
81	Ingrijitor curatenie				1	G	vacant

SECTIA CHIRURGIE GENERALA - 38 PATURI - 878 m.p.

DIN CARE:

CHIRURGIE GENERALA - 15 PATURI

ORTOPEDIE SI TRAUMATOLOGIE 10 PATURI

COMPARTIMENT OFTALMOLOGIE 10 PATURI

COMPARTIMENT ORL 3 PATURI

82	Medic primar -sef sectie	chirurgie.gen.			4	S	1	suspendat
83	Medic specialist	chirurgie.gen.			5	S	1	
84	Medic specialist	chirurgie.gen.			2	S	1	
85	Medic specialist	chirurgie.gen.			2	S	1	vacant
86	Medic primar	ortopedie			4	S	1	suspendat
87	Medic specialist	ortopedie			2	S	1	
88	Medic specialist	oftalmologie			5	S	1	

89	Medic specialist		oftalmologie		2	S	1	
90	Asistent med. princ. Sef sectie		generalist		5	PL	1	
91	Asistent med. princ.		generalist		3	PL	1	
92	Asistent med. princ.		generalist		5	PL	1	
93	Asistent med. princ.		generalist		4	PL	1	
94	Asistent med. princ.		generalist		5	PL	1	
95	Asistent med. princ.		generalist		5	PL	1	
96	Asistent med. princ.		generalist		5	PL	1	vacant
97	Asistent med. princ.		generalist		5	PL	1	
98	Asistent med. princ.		generalist		5	PL	1	
99	Asistent med.		generalist		5	PL	1	
100	Asistent med.principal		generalist		2	PL	1	
101	Asistent medical		generalist		3	PL	1	vacant
102	Infirmiera				3	G	1	
103	Infirmiera				5	G	1	
104	Infirmiera				4	G	1	
105	Infirmiera				4	G	1	
106	Infirmiera				5	G	1	
107	Infirmiera				3	G	1	
108	Ingrijitor curatenie				1	G	1	
109	Ingrijitor curatenie				1	G	1	vacant
110	Ingrijitor curatenie				1	G	1	vacant

SALA DE PANSAMENTE

111	Asistent med. debutant		generalist		1	PL	1	vacant
-----	------------------------	--	------------	--	---	----	---	--------

SECTIA PEDIATRIE - 25 Paturi - din care - 3 paturi Terapie acuta - 712mp

112	Medic primar - Sef sectie		pediatrie		5	S	1	
113	Medic specialist		pediatrie		2	S	1	
114	Medic specialist		pediatrie		2	S	1	vacant
115	Medic specialist		pediatrie		2	S	1	vacant
116	Asistent med. princ. Sef sectie		pediatrie		5	PL	1	
117	Asistent med. princ.		pediatrie		5	PL	1	
118	Asistent med. princ.		pediatrie		3	PL	1	vacant
119	Asistent med. princ.		pediatrie		4	PL	1	
120	Asistent med. princ.		pediatrie		5	PL	1	
121	Asistent med. princ.		pediatrie		5	PL	1	
122	Asistent med.princ.		pediatrie		5	PL	1	
123	Asistent med.		pediatrie		5	PL	1	

124	Asistent med.	pediatrie	3	PL	1	vacant
125	Asistent med.debutant	pediatrie	3	PL	1	vacant
126	Asistent med.debutant	pediatrie	1	PL	1	vacant
127	Infirmiera		2	G	1	
128	Infirmiera		1	G	1	
129	Infirmiera		2	G	1	
130	Infirmiera		5	G	1	
131	Infirmiera		5	G	1	vacant
132	Infirmiera		5	G	1	vacant
133	Infirmiera		3	G	1	
134	Ingrijitor curatenie		1	G	1	vacant
135	Ingrijitor curatenie		1	G	1	vacant

COMPARTIMENT DIETETICA

136	Asistent med. princ.	dietetica	5	PL	1	
-----	----------------------	-----------	---	----	---	--

SECTIA OBSTRETICA - GINECOLOGIE 35 paturi -1310 m.p.

din care 8 paturi neonatologie

137	Medic primar - Sef sectie	obst.ginec	3	S	1	cu delegatie
138	Medic primar	obst.ginec	5	S	1	
139	Medic primar	obst.ginec.	4	S	1	
140	Medic primar	obst.ginec.	3	S	1	suspendat
141	Medic specialist	obst.ginec	2	S	1	
142	Medic primar	neonatalogie/pediatri	5	S	1	
143	Medic specialist	neonatalogie	2	S	1	
144	Asistent med. princ. Sef sectie	obst.ginec	5	PL	1	
145	Asistent med. princ.	obst.ginec	5	PL	1	vacant
146	Asistent med. princ.	obst.ginec	5	S	1	
147	Asistent med. princ.	obst.ginec	5	PL	1	
148	Asistent med. princ.	obst.ginec	5	PL	1	
149	Asistent med. princ.	obst.ginec	5	M	1	
150	Asistent med. princ.	obst.ginec.	5	S	1	
151	Asistent med. principal	obst.ginec.	5	S	1	vacant
152	Asistent med.	pediatrie	5	PL	1	
153	Asistent med.	pediatrie	4	PL	1	
154	Asistent med. princ.	pediatrie	5	PL	1	
155	Asistent med. princ.	pediatrie	5	PL	1	
156	Asistent med. princ.	pediatrie	5	PL	1	
157	Asistent med.	generalist	5	PL	1	

158	Asistent med. debutant		generalist	0	PL	1	vacant
159	Asistent med. debutant		generalist	0	PL	1	vacant
160	Asistent med. debutant		generalist	0	PL	1	vacant
161	Asistent med. princ.		pediatrie	5	PL	1	vacant
162	Asistent med. princ.		pediatrie	5	PL	1	vacant
163	Asistent med.		generalist	5	PL	1	vacant
164	Asistent med.		generalist	5	PL	1	vacant
165	Infirmiera			5	G	1	
166	Infirmiera			3	G	1	
167	Infirmiera			2	G	1	
168	Infirmiera			5	G	1	
169	Infirmiera			5	G	1	
170	Infirmiera			5	G	1	
171	Infirmiera			5	G	1	vacant
172	Infirmiera			5	G	1	vacant
173	Infirmiera			5	G	1	vacant
174	Infirmiera			5	G	1	vacant
175	Ingrijitor curatenie			5	G	1	
176	Ingrijitor curatenie			5	G	1	vacant

SALA DE NASTERE

177	Asistent med. princ.		obst.ginec	4	PL	1	
178	Asistent med. princ.		obst.ginec	5	PL	1	
179	Asistent med. princ.		obst.ginec	2	PL	1	
180	Asistent med.princ.		obst.ginec	3	PL	1	
181	Asistent med.princ.		obst.ginec	5	PL	1	
182	Ingrijitor curatenie			0	G	1	

COMPARTIMENT ONCOLOGIE MEDICALA - 11 Paturi - 257 mp

183	Medic primar		oncologie med.	5	S	1	
184	Medic specialist		oncologie med.	2	S	1	
185	Asistent med. princ.		generalist	5	S	1	
186	Asistent med. princ.		generalist	5	S	1	
187	Asistent med. princ.		generalist	5	PL	1	
188	Asistent med. princ.		generalist	5	PL	1	
189	Asistent med. princ.		generalist	3	PL	1	
190	Infirmiera			5	G	1	
191	Infirmiera			4	G	1	vacant
192	Infirmiera			5	G	1	
193	infirmiera			5	G	1	

194	Infirmiera			3	G	1	
195	Ingrijitor curatenie			1	G	1	

SECTIA NEUROLOGIE - 30 paturi 266 mp

196	Medic primar - Sef sectie	neurologie		5	S	1	vacant
197	Medic specialist	neurologie		2	S	1	CIM suspendat
198	Medic specialist	neurologie		2	S	1	CIM suspendat
199	Medic specialist	neurologie		1	S	1	
200	Asistent med. princ. Sef sectie	generalist		5	S	1	
201	Asistent med. princ.	generalist		5	S	1	vacant
202	Asistent med. princ.	generalist		5	PL	1	vacant
203	Asistent med. princ.	generalist		5	PL	1	
204	Asistent med. princ.	generalist		5	PL	1	vacant
205	Asistent med. princ.	generalist		3	PL	1	
206	Asistent med. princ.	generalist		2	PL	1	
207	Asistent med. princ.	generalist		3	PL	1	
208	Asistent med. princ.	generalist		3	PL	1	
209	Asistent med. princ.	generalist		5	PL	1	
210	Asistent med. princ.	generalist		4	PL	1	
211	Asistent med. princ.	generalist		4	PL	1	
212	Asistent med. princ.	generalist		1	PL	1	
213	Asistent med. princ.	generalist		3	PL	1	vacant
214	Asistent med.	generalist		2	PL	1	vacant
215	Asistent med.	generalist		2	PL	1	vacant
216	Infirmiera			3	G	1	
217	Infirmiera			5	G	1	
218	Infirmiera			3	G	1	
219	Infirmiera			2	G	1	
220	Infirmiera			5	G	1	
221	Infirmiera			3	G	1	
222	Infirmiera			3	G	1	
223	Infirmiera			1	G	1	
224	Infirmiera			5	G	1	
225	Infirmiera			5	G	1	vacant
226	Infirmiera			2	G	1	vacant
227	Infirmiera			2	G	1	vacant
228	Infirmiera			2	G	1	vacant
229	Infirmiera			2	G	1	vacant
230	Infirmiera			2	G	1	vacant

231	Ingrjiitor curatenie		4	G	1	
232	Ingrjiitor curatenie		2	G	1	vacant
233	Ingrjiitor curatenie		2	G	1	vacant

COMPARTIMENT RECUPERARE MEDICINA FIZICA SI BALNEOLOGIE - 22 paturi - 712 mp

234	Medic specialist-coordonator	B.F.T.	5	S	1	vacant
235	Medic rezident anul III	reab.med	0	S	1	
236	Asistent med. princ.	generalist	5	PL	1	
237	Asistent med. princ.	generalist	4	PL	1	
238	Asistent med. princ.	generalist	5	PL	1	
239	Asistent med.princ.	generalist	2	PL	1	
240	Asistent med. princ.	generalist	3	PL	1	
241	Asistent med. princ.	generalist	4	PL	1	vacant
242	Asistent med. debutant	generalist	0	PL	1	vacant
243	infirmiera		5	G	1	
244	infirmiera		5	G	1	
245	infirmiera		2	G	1	
246	infirmiera		5	G	1	
247	infirmiera		5	G	1	
248	infirmiera		2	G	1	vacant
249	infirmiera		2	G	1	vacant
250	infirmiera		2	G	1	vacant
251	infirmiera		2	G	1	vacant
252	infirmiera		2	G	1	vacant
253	infirmiera		2	G	1	vacant
254	Ingrjiitor curatenie		0	G	1	vacant
255	Ingrjiitor curatenie		0	G	1	vacant

COMPARTIMENT BOLI INFECTIOASE - 20 Paturi 435 mp

256	Medic primar -coordonator	boli infect.	5	S	1	
257	Medic specialist	boli infect.	2	S	1	vacant
258	Asistent med. princ.	generalist	5	PL	1	
259	Asistent med. princ.	generalist	4	PL	1	
260	Asistent med. princ.	generalist	5	PL	1	
261	Asistent med. princ.	generalist	4	PL	1	
262	Asistent med. princ.	generalist	5	PL	1	

263	Asistent med. princ.	generalist	3	PL	1	
264	Asistent med. princ.		4	PL	1	
265	Infirmiera		5	G	1	
266	Infirmiera		4	G	1	
267	Infirmiera		3	G	1	
268	Infirmiera		3	G	1	
269	Infirmiera		3	G	1	
270	Infirmiera		3	G	1	
271	Ingrijitor curatenie		2	G	1	vacant
272	Ingrijitor curatenie		2	G	1	vacant

COMPARTIMENT DE PRIMIRE URGENTE - 712 mp

273	Medic specialist șef	med. de urgenta	4	S	1	
274	Medic specialist	med. de urgenta	3	S	1	vacant
275	Medic specialist	med. de urgenta	3	S	1	vacant
276	Medic specialist	med. de urgenta	3	S	1	vacant
277	Medic specialist	med. de urgenta	3	S	1	vacant
278	Medic specialist	med. de urgenta	3	S	1	vacant
279	Asistent med. princ.șef	generalist	5	S	1	vacant
280	Asistent med. princ.	generalist	5	S	1	
281	Asistent med. princ.	generalist	5	S	1	
282	Asistent med. princ.	generalist	5	S	1	
283	Asistent med. princ.	generalist	5	PL	1	
284	Asistent med. princ.	generalist	5	S	1	vacant
285	Asistent med. princ.	generalist	5	PL	1	
286	Asistent med. princ.	pediatrie	4	PL	1	
287	Asistent med. princ.	pediatrie	5	PL	1	
288	Asistent med. princ.	pediatrie	3	PL	1	
289	Asistent med. princ.	generalist	5	M	1	
290	Asistent med. princ.	pediatrie	3	PL	1	
291	Asistent med. princ.	generalist	4	PL	1	
292	Asistent med. princ.	generalist	3	PL	1	
293	Asistent med. princ.	generalist	3	PL	1	
294	Asistent med. princ.	generalist	5	PL	1	
295	Asistent med. princ.	pediatrie	2	PL	1	
296	Asistent med. princ.	generalist	2	PL	1	vacant
297	Asistent med.princ.	generalist	5	PL	1	
298	Asistent med.princ.	generalist	5	PL	1	
299	Asistent med.princ.	generalist	5	PL	1	vacant

300	Asistent med.princ.	generalist	5	PL	1	vacant
301	Asistent med.	generalist	5	PL	1	vacant
302	Asistent med.	generalist	5	PL	1	vacant
303	Asistent med.debutant	generalist	5	PL	1	vacant
304	Registrator medical principal		5	M	1	
305	Registrator medical principal		5	M	1	
306	Registrator medical		2	M	1	
307	Registrator medical		2	M	1	vacant
308	Registrator medical		2	M	1	vacant
309	Infirmiera		3	G	1	
310	Infirmiera		1	G	1	
311	Infirmiera		4	G	1	
312	Infirmiera		5	G	1	
313	Infirmiera		0	G	1	vacant
314	Infirmiera		0	G	1	vacant
315	Infirmiera		0	G	1	vacant
316	Infirmiera		0	G	1	vacant
317	Infirmiera		0	G	1	vacant
318	Infirmiera		0	G	1	vacant
319	brancardier		3	G	1	
320	brancardier		5	G	1	
321	brancardier		5	G	1	
322	brancardier		0	G	1	vacant
323	brancardier		0	G	1	vacant
324	brancardier		0	G	1	vacant
325	brancardier		0	G	1	vacant
326	brancardier		0	G	1	vacant
327	brancardier		0	G	1	vacant
328	brancardier		0	G	1	vacant
329	Ingrijitor curatenie		5	G	1	vacant
330	Ingrijitor curatenie		0	G	1	vacant

FARMACIE - 330 mp

331	Farmacist sef	farmacie	2	S	1	
332	Farmacist rezident II	farmacie	0	S	1	
333	Asistent med. princ.	farmacie	5	PL	1	
334	Asistent med.	farmacie	5	PL	1	
335	Asistent med.princ.	farmacie	2	PL	1	
336	Asistent med.princ.	farmacie	4	PL	1	

337	Asistent med. debutant	farmacie	1	PL	1	vacant
338	Ingrijitor curatenie		4	G	1	
339	Operator calculator		5	M	1	vacant

BLOC OPERATOR

340	Asistent med. princ. cu gestiune	generalist	5	S	1	
341	Asistent med. prin.	generalist	4	S	1	
342	Asistent med. princ.	generalist	3	PL	1	
343	Asistent med. princ. cu gestiune	generalist	5	PL	1	
344	Ingrijitor curatenie		1	G	1	vacant

STERILIZARE

345	Asistent med. princ.	generalist	5	PL	1	
346	Asistent med. princ.	generalist	5	PL	1	
347	Asistent med. princ.	generalist	5	PL	1	

DIETETICA

348	Asistent med. princ.	dietetica	5	PL	1	
349	Asistent med.	dietetica	2	PL	1	CJM suspendat

LABORATOR ANALIZE MEDICALE - 449 m.p.

350	Medic specialist	laborator	4	S	1	vacant
351	Medic primar	laborator	4	S	1	
352	Chimist principal - Sef laborator	chimie	5	S	1	
353	Chimist principal	chimie	5	S	1	
354	Biolog principal	bacteriologie	5	S	1	
355	Biolog	bacteriologie	2	S	1	
356	Asistent med. princ. Sef laborator	laborator	5	PL	1	
357	Asistent med. princ.	laborator	4	PL	1	
358	Asistent med. princ.	laborator	4	PL	1	
359	Asistent med. princ.	laborator	5	PL	1	
360	Asistent med. princ.	laborator	4	PL	1	
361	Asistent med. princ.	laborator	3	PL	1	
362	Asistent med.	laborator	1	PL	1	
363	Ingrijitor curatenie		3	G	1	
364	Ingrijitor curatenie		3	G	1	

Punct de recoltare sange

365	Asistent med. princ.	laborator	5	PL	1	
-----	----------------------	-----------	---	----	---	--

LABORATOR UNIC RADIOLOGIE SI IMAGISTICA MEDICALA

366	Medic primar-medic coordonator	radiologie si imag medicala	3	S	1
367	Medic specialist	radiologie si imag medicala	2	S	1
368	Fizician medical specialist	fizica	2	S	1
369	Asistent med. princ.	radiologie	5	S	1
370	Asistent med. princ.	radiologie	5	PL	1
371	Asistent med. princ.	radiologie	3	PL	1
372	Asistent med. princ.	radiologie	5	PL	1
373	Asistent med. princ.	radiologie	5	PL	1

RADIOTERAPIE

LABORATOR RECUPERARE MEDICINA FIZICA SI BALNEOLOGIE

374	Kinetoterapeut	fiziokinetoterapeut	3	S	1
375	Asistent med. princ.	balneofizioterapeut	5	S	1
376	Asistent med. princ.	balneofizioterapeut	5	PL	1
377	Asistent med.	balneofizioterapeut	1	PL	1
378	Asistent med.	balneofizioterapeut	1	PL	1
379	Asistent med.	balneofizioterapeut	1	PL	1
380	Asistent med. princ.	balneofizioterapeut	5	PL	1
381	Asistent med.	balneofizioterapeut	0	PL	1
382	Asistent med.	balneofizioterapeut	0	PL	1
383	Asistent med.	balneofizioterapeut	0	PL	1

SERVICIU DE ANATOMIE PATOLOGICA - 127 mp

Compartiment de Citologie					
384	Biolog specialist	bacteriologie	5	S	1

Compartiment de Histopatologie

385	Medic specialist	anatom. pat.	3	S	1
386	Asistent med. princ.	laborator	5	PL	1
387	Asistent med. princ.	laborator	3	PL	1

Compartiment de prosectura

388	Ingrijitor curatenie		5	G	1
-----	----------------------	--	---	---	---

COMPARTIMENT CPIAAM

389	Medic rezident III	epidemiologie	0	S	1
390	Asistent med. princ.	igiiena	4	PL	1
391	Agent DDD		5	G	1

BIROU EVALUARE ȘI STATISTICA MEDICALA

392	Analist programator IA - Sef birou cu delegatie		5	S	1
393	Statistician med. princ.		5	M	1
394	Asistent med.	generalist	2	PL	1
395	Registrator medical principal	medicala	5	M	1
396	Registrator medical	medicala	5	M	1

COMPARTIMENT EXPLORĂRI FUNCȚIONALE

397	Asistent med. debutant	generalist	5	PL	1
-----	------------------------	------------	---	----	---

CABINET BOLI INFECTIOASE

CABINET ONCOLOGIE MEDICALA

398	Asistent med. princ.	generalist	3	PL	1
-----	----------------------	------------	---	----	---

CABINET PLANIFICARE FAMILIALĂ

CABINET DIABET ZAHARAT NUTRIȚIE ȘI BOLI METABOLICE

399	Medic rezident III	diabet zaharat, nutritie si boli metabolice	0	S	1
400	Asistent med. debutant	generalist	0	PL	1

DISPENSAR TBC

AMBULATORIUL INTEGRAT

CABINET MEDICINA INTERNA

401	Medic specialist	med. interna	5	S	1
402	Medic rezident III	med. interna	0	S	1
403	Asistent med. debutant	generalist	1	PL	1

CABINET CARDIOLOGIE

404	Asistent med. princ.	generalist	5	PL	1	
CABINET O.R.L.						
405	Medic specialist	ORL	5	S	1	
406	Asistent med. debutant	medicala	0	PL	1	vacant
CABINET OFTALMOLOGIE						
407	Asistent med. debutant	medicala	1	PL	1	vacant
CABINET CHIRURGIE GENERALA						
408	Asistent med. princ.	medicala	3	PL	1	
CABINET OBSTETRICA GINECOLOGIE						
409	Asistent med. debutant	obst.ginec	0	PL	1	vacant
CABINET PEDIATRIE						
410	Asistent med. debutant	pediatrie	1	PL	1	vacant
CABINET ORTOPEDIE SI TRAUMATOLOGIE						
411	Asistent med. debutant	medicala	0	S	1	vacant
CABINET NEUROLOGIE						
412	Asistent med. debutant	medicala	1	PL	1	vacant
CABINET DERMATOVENEROLOGIE						
413	Medic rezident III	derm.vener.	0	S	1	
414	Asistent med. debutant	medicala	1	PL	1	vacant
CABINET PSIHIATRIE PEDIATRICA SI CABINET NEUROLOGIE PEDIATRICA						
415	Medic specialist	psihiatrie pediatria	4	S	1	
416	Medic specialist	neurologie pediatria	2	S	1	vacant
417	Asistent med. princ.	medicala	5	PL	1	
418	Asistent med. debutant	medicala	1	PL	1	vacant
RECUPERARE , MEDICINA FIZICA SI BALNEOLOGIE						
419	Asistent med. debutant		0	PL	1	vacant

CABINET PSIHIATRIE

420	Medic specialist	psihiatrie	2	S	1	vacant
421	Asistent med. debutant	medicinala	1	PL	1	vacant

CABINET GASTROENTEROLOGIE

422	Medic specialist	gastroenterologie	2	S	1	vacant
423	Asistent med. debutant	medicinala	1	PL	1	vacant

CABINET REUMATOLOGIE

424	Medic specialist	reumatologie	2	S	1	
425	Asistent med. debutant	generalist	1	PL	1	vacant

CABINET STOMATOLOGIE (asigura si urgente)

426	Medic primar	ortod. si ortopedie dento - faciala	3	S	1	
427	Medic	stomatologie	4	S	1	
428	Medic	stomatologie	4	S	1	
429	Asistent med. debutant	generalist	0	PL	1	vacant
430	Asistent med. debutant	generalist	0	PL	1	vacant

PERSONAL CURATENIE

431	Ingrijitor curatenie		3	G	1	
432	Ingrijitor curatenie		1	G	1	vacant

**APARAT FUNCTIONAL
COMPARTIMENT de MANAGEMENT al CALITATII SERVICIILOR MEDICALE**

433	Medic specialist		2	S	1	vacant
434	Asistent med.	generalist	2	PL	1	

BIROU RESURSE UMANE

435	Economist IA - Sef birou	stiinte ec./juridice	5	S	1	CIM determinata
436	Inspector de specialitate I	Stiine Juridice /	5	S	1	suspendat C.I.M. determinata 1 an
437	Economist IA	stiinte ec.	5	S	1	
438	Referent I A		5	M	1	

BIROU FINANCIAR - CONTABILITATE

439	Economist IA - Sef birou - cu delegatie	stiinte ec.	5	S	1	vacant
440	Economist IA	stiinte ec.	5	S	1	suspendat C.I.M. determinata 1 an
441	Economist debutant	stiinte ec.	1	S	1	
442	Casier I		5	M	1	

BIROU APROVIZIONARE, TRANSPORT, ADMINISTRATIV, SECURITATEA MUNCII, PSI, PROTECTIE CIVILA SI SITUATII DE URGENTA

443	Secretar-dactilograf debutant		5	M	1	
444	Tehnician IA		5	M	1	
445	Arhivar I		2	M	1	
446	Magaziner I		4	M	1	

COMPARTIMENT ACHIZITII PUBLICE, CONTRACTARE

447	Economist I	stiinte ec.	3	S	1	
448	Consilier juridic IA	stiinte juridice	5	S	1	vacant C.I.M. Determinata 1 an

COMPARTIMENT TEHNIC

449	Inginer I	tehnic	2	S	1	
-----	-----------	--------	---	---	---	--

450 Preot definitiv

450	Preot definitiv	teologie	5	S	1	
-----	-----------------	----------	---	---	---	--

BLOC ALIMENTAR

451	bucatar II	bucatar II	5	G	1	
452	bucatar III	bucatar III	5	G	1	
453	bucatar IV	bucatar IV	5	G	1	
454	bucatar IV	bucatar IV	5	G	1	vacant
455	Muncitor necalificat		3	G	1	
456	Muncitor necalificat		5	G	1	
457	Muncitor necalificat		5	G	1	vacant
458	Muncitor necalificat		2	G	1	vacant

SPALATORIE

459	Spalatoarea - cu gestiune		5	G	1	
460	Spalatoarea		3	G	1	
461	Spalatoarea		3	G	1	
462	Spalatoarea		4	G	1	
463	Spalatoarea		5	G	1	
464	Spalatoarea		3	G	1	vacant

465	Spalatoreasa		3	G	1	vacant
-----	--------------	--	---	---	---	--------

MUNCITORI

466	Muncitor I- sef formatie muncitori					
467	Muncitor calificat I	electrician	5	G	1	vacant
468	Muncitor calificat I	electrician	5	G	1	
469	Muncitor calificat I	electrician	5	G	1	
470	Muncitor calificat I	electrician	5	G	1	
471	Muncitor calificat I	electrician	5	G	1	
472	Muncitor calificat I	inst. sanit.	5	G	1	
473	Muncitor calificat I	inst. sanit.	5	G	1	vacant
474	Muncitor calificat I	inst. sanit.	5	G	1	
475	Muncitor calificat I	fochist	5	G	1	
476	Muncitor calificat I	fochist	5	G	1	
477	Muncitor calificat I	fochist	5	G	1	
478	Muncitor calificat I	fochist	5	G	1	vacant
479	Muncitor calificat I	lac.mec.	5	G	1	
480	Muncitor calificat	lac.mec.	4	G	1	vacant
481	Muncitor calificat	zidar	5	G	1	vacant
482	Muncitor calificat	zugrav	0	G	1	vacant
483	Muncitor calificat II	zugrav	5	G	1	
484	Muncitor calificat II	liftier	5	G	1	
485	Muncitor calificat II	liftier	5	G	1	
486	Muncitor calificat II	liftier	5	G	1	
487	Muncitor calificat II	telefonista	5	G	1	

SOFERI

488	Sofer II	sofer	5	G	1	
489	Sofer II	sofer	5	G	1	

Paza

490	Paznic I		5	G	1	
491	Paznic		5	G	1	
492	Paznic I		5	G	1	
493	Paznic		5	G	1	vacant
494	Paznic		5	G	1	vacant

SPATII VERZI

495	Muncitor necalificat		5	G	1
496	Muncitor necalificat		5	G	1
497	Muncitor necalificat		5	G	1
					vacant
TOTAL					497

Posturile din prezentul stat de personal se regasesc si in statul de functii pe unitate .

Manager, Director Medical,
Jr. Alexe Lucian Dr. Temelle Victoria

Director Fin. Cont
Ec. Pana Florian

Consilier juridic
Jr. Raduca Alexandru



SPITALUL MUNICIPAL "CARITAS" ROSIORII DE VEDE
 ADRESA : Str. Carpati nr. 33 ROSIORII DE VEDE
 TEL/FAX: 0247406611/0247466388

STAT DE FUNCTII
 VALABIL CU DATA DE 01.03 .2020

BUGETUL DE STAT

Nr. crt.	Denumire functie cf. Legii 250/2016	Specialitate	Gradatia	Nivel studii	Cuantu m post
0	1	2	3	5	6
1	Medic rezident anul III	medicina.interna	0	S	1
2	Medic rezident anul III	derm.vener.	0	S	1
3	Medic rezident anul III	epidemiologie	0	S	1
4	Medic rezident anul III	reabilitare medicala	0	S	1
5	Medic rezident anul III	diabet zaharat,	0	S	1
6	Farmacist rezident III	farmacie	0	S	1

TOTAL					6
--------------	--	--	--	--	----------

Posturile din prezentul stat de personal se regasesc si in statul de functii pe unitate .

Manager, Director Medical,
 Jr. Alexe Lucian Dr. Temelle Victoria

Director Fin. Cont
 Ec. Pana Florian

Consilier juridic
 Jr. Raduca Alexandru

